

NAMI WINTER SCHOOL 2013

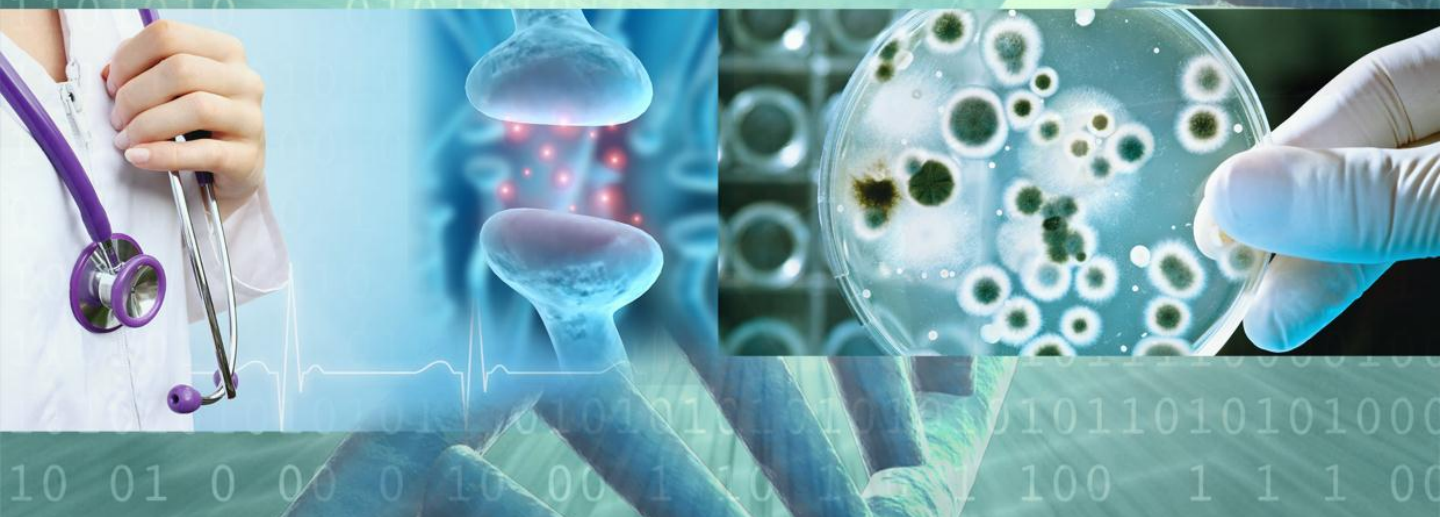
26 January 2013

LT A, The Hong Kong University of Science and Technology

Nanobiomaterials for Biomedical and Healthcare Applications: From Technology to Markets

CPD
Certificate
will be
issued

Free
Admission



 納米及先進材料研發院有限公司
Nano and Advanced Materials Institute Limited

www.nami.org.hk

Co-organizers:

 THE HONG KONG
INSTITUTION OF ENGINEERS
香港工程師學會
Biomedical Division
生物醫學分部

 香港醫療及保健器材行業協會
Hong Kong Medical and Healthcare Device Industries Association

 HKBO
Hong Kong Biotechnology Organization
香港生物科技協會

 HKTDC
香港貿易發展局

Would you like to know more about the latest developments of biochips and the use of nanoparticles in diagnostics? What is the current status of nanomedicines? What are the steps in getting technology to products and eventually into markets? What typical challenges does the industry face when launching healthcare products?

The use of nanobiomaterials in medicines, medical devices and healthcare products has gained tremendous interests in recent years. In this NAMI's Winter School, co-organized by The Biomedical Division of The Hong Kong Institution of Engineers (HKIE), The Hong Kong Medical and Healthcare Device Industries Association (HKMHDIA), The Hong Kong Biotechnology Organization (HKBIO) and The Hong Kong Trade Development Council (HKTDC), distinguished speakers from both academia and industry will share with us their most up-to-date research in the areas of in vitro diagnostics, targeted drug delivery and medical devices using nanotechnology techniques. Participants will also have the chance to learn about the latest advances in clinical trial practices in Hong Kong as well as the product development from a local biotech perspective.

Date : 26 January 2013 (Saturday)

Time : 8:45am – 5:45pm

Agenda : Session 1 - *Advances in Diagnostics*
Session 2 - *Application of Nanotechnology in Pharma and Medical Devices*
Session 3 - *From Research to Commercialization*

Admission : FREE (Register to reserve your seats)

Speakers :

Prof. Ying CHAU *The Hong Kong University of Science and Technology*

Prof. Paul K. CHU *The City University of Hong Kong*

Dr. Ricky FU *Plasma Technology Limited, Hong Kong*

Prof. Philip KWOK *The University of Hong Kong*

Dr. Benjamin LEE *Comprehensive Drug Enterprises Limited, and
PolyGum Technologies Limited, Hong Kong*

Prof. Benzhong TANG *The Hong Kong University of Science and Technology*

Prof. Michael YANG *The City University of Hong Kong*

Prof. Albert YU *Hai Kang Life Corporation Limited, Hong Kong*

Prof. Benny ZEE *The Chinese University of Hong Kong*

*** CPD Certificate will be issued to HKIE members ***

For registration, please complete the attached Registration Form,
fax it to 2358 8113 or email to sammichan@nami.org.hk.

NAMI Winter School 2013

Nanobiomaterials for Biomedical and Healthcare Applications:

From Technology to Markets

26 January 2013

SESSION	TIME	TITLE OF PRESENTATION	SPEAKER
	0845	Registration	
Introduction	0900	Opening Speeches	Dr. Cecilia PANG <i>Biotechnology Director, Innovation and Technology Commission, HKSAR</i> Prof. Ka Ming NG <i>CEO, Nano and Advanced Materials Institute Limited Chair Professor, Dept of Chemical and Biomolecular Engineering, HKUST</i>
Advances in Diagnostics Session Chair: Prof. Albert YU <i>Chairman, HKBIO</i>	0915	Overview of Nanodevices for Healthcare Diagnostic Applications	Prof. Michael YANG <i>Chair Professor, Dept of Biology and Chemistry, CityU Director, Biotech and Health Centre, CityU</i>
	1000	Nanoparticles for Chemosensing and Bioimaging	Prof. Benzhong TANG <i>Chair Professor, Dept of Chemistry, HKUST</i>
	1045	Innovative Molecular Diagnostics for Biological Health and Safety	Prof. Albert YU <i>Chairman and CEO, Hai Kang Life Corporation Limited, Hong Kong</i>
	1130	Q & A (Moderated by Session Chair)	
	1150	Lunch Break	
Application of Nanotechnology in Pharma and Medical Devices Session Chair: Ir. Richard LUN <i>Secretary General, HKMHDIA</i>	1300	Protein Nanoparticles for Drug Delivery and Latest Trends in Nanomedicines	Prof. Philip KWOK <i>Assistant Professor, Dept of Pharmacology and Pharmacy, HKU</i>
	1345	Application of Nanotechnology for Drug Delivery	Prof. Ying CHAU <i>Associate Professor, Dept of Chemical and Biomolecular Engineering, HKUST</i>
	1430	Plasma-based Technology for Biomedical Applications	Dr. Ricky FU <i>Director, Plasma Technology Limited, Hong Kong</i> Prof. Paul K. CHU <i>Chair Professor of Materials Engineering, Dept of Physics and Materials Engineering, CityU</i>
	1515	Q & A (Moderated by Session Chair)	
	1535	Break	
From Research to Commercialization Session Chair: Ir. Prof. John MOK <i>HKIE</i>	1545	Clinical Trials/Regulatory on Pharmaceuticals and Devices in Hong Kong	Prof. Benny ZEE <i>Director, Centre for Clinical Trials, CUHK Head, Division of Biostatistics, CUHK Assistant Dean (Research), Faculty of Medicine, CUHK Professor, CUHK</i>
	1630	Drug Development Experience and Its Challenges in Hong Kong and the Region	Dr. Benjamin LEE <i>Partner & Managing Director, Comprehensive Drug Enterprises Limited CTO, PolyGum Technologies Limited, Hong Kong</i>
	1715	Q & A (Moderated by Session Chair)	
Wrap-up	1735	Closing Speech	Dr. Connie KWOK <i>Director of Bio and Healthcare Products, Nano and Advanced Materials Institute Limited</i>

*** End of Program at 1745 ***

Time : 8:45am – 5:45pm

Venue : Citigroup Lecture Theatre (LT A), The Hong Kong University of Science and Technology

REGISTRATION FORM

To be returned to NAMI on or before 21 January 2013

To: Miss Sammi Chan

Email: sammichan@nami.org.hk

Fax: 2358 8113

Title	Full Name	Company/Institute	Tel	Email	Degree Holder	HKIE Member *
1.					Yes / No	Yes / No
2.					Yes / No	Yes / No
3.					Yes / No	Yes / No
4.					Yes / No	Yes / No
5.					Yes / No	Yes / No

* CPD Certificate will be issued to HKIE members at the venue at the end of the program

Due to the confidential information in the presentations, no proceedings will be distributed.

For enquiries, please contact Miss Sammi Chan at 2358 5763 or sammichan@nami.org.hk.

